



# EUROPACIF 2155 ULTRA

preservative free  
versatile opacifier

## PRODUCT DESCRIPTION

Europacif 2155 Ultra is a preservative free versatile opacifier developed for giving formulations a milky and creamy appearance.

INCI NAME Styrene/Acrylates Copolymer

## BENEFITS

- Highly effective
- Low dosage level
- High whiteness
- Dense opacity
- Excellent formulation stability and compatibility
- No modification of the formulation cleansing properties
- Easy to handle
- Preservative free

## APPLICATIONS

### Home care

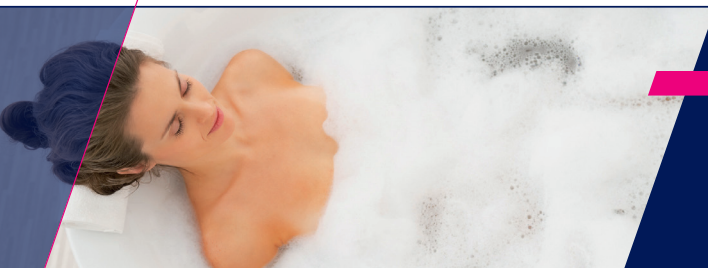
- all-purpose cleaners
- dish washing liquids
- fine laundry detergents
- toilet cleaners



### Personal care

- body washes
- facial cleansers
- foam baths
- liquid soaps
- shampoos and skin care products

## OPACIFYING PERFORMANCE



A softening shower cream has been prepared with different dosage levels of Europacif 2155 Ultra from 0.1% to 1.0%. The samples are shown with 0, 0.1, 0.2, 0.5 and 1.0% Europacif 2155 Ultra. High whiteness is observed from 0.5% Europacif 2155 Ultra.



## RECOMMENDATIONS FOR USE

Europacif 2155 Ultra should always be added at the end of the manufacturing process, esp. after final pH adjustment. Europacif 2155 Ultra should be prediluted in water at a ratio of 1 part opacifier to 4 parts of water just before addition to the formulation. The addition of Europacif 2155 Ultra should always happen slowly but under sufficient stirring. Dosage level: 0.1 - 1.0%.

## GUIDE FORMULATIONS



Softening shower cream   Ref 993-08B		
INGREDIENT	INCI DESCRIPTION	%w/w
Water	Aqua	55.7
LES28	Sodium Laureth Sulfate	30.0
Glycerin	Glycerin	6.0
Euroquat HCB LA	Cocamidopropyl Betaine	4.0
Euroglyc AMS	Sodium Cocoamphoacetate	2.0
Citric acid	Citric Acid	Qs to pH 5.5
ProtaFlor HWQ AF	Sodium Glutamate (and) Cocotrimonium Methosulfate (and) Laurdimonium Hydroxypropyl Hydrolzed Wheat Protein (and) Sodium Cocoamphoacetate (and) Hydrolyzed Wheat Gluten	2.0
Europacif 2155 Ultra	Styrene/Acrylates Copolymer	0.3
Sodium chloride	Sodium Chloride	Qs to 3000 mPa.s

Mild milky hand soap   Ref 993-08A		
INGREDIENT	INCI DESCRIPTION	%w/w
Water	Aqua	63.6
LES28	Sodium Laureth Sulfate	24.0
Euroquat HC47 VG	Cocamidopropyl Betaine	6.2
Euroglyc D	Disodium Cocoamphoacetate	4.0
Glycerin	Glycerin	2.0
Lactic acid	Lactic Acid	Qs to pH 6.0
Europacif 2155 Ultra	Styrene/Acrylates Copolymer	0.2
Sodium chloride	Sodium Chloride	Qs to 4000 mPa.s

White and shine bleach gel   Ref 2482-09A		
INGREDIENT	INCI DESCRIPTION	%w/w
Water	Aqua	68.0
Sodium hypochlorite (2.2% active Cl)	-	10.0
Sodium hydroxide (0.25M)	Sodium Hydroxide	10.0
LES28	Sodium Laureth Sulfate	1.8
Euroxide M25	Myristamine Oxide	9.0
Eurasol PKZ	Potassium Palmate	1.0
Europacif 2155 Ultra	Styrene/Acrylates Copolymer	0.2
Sodium chloride	Sodium Chloride	Qs to 1500 mPa.s



### EOC Surfactants

Durmakker 35  
B-9940 Evergem

p/a IP De Bruwaan 12  
B-9700 Oudenaarde

T +32 55 23 58 58  
F +32 55 23 58 59

surfactants@eocgroup.com  
www.eocgroup.com

All recommendations for the use of our products, whether given by us in writing, orally, or to be implied from data or test results obtained by us, are based on the current state of our knowledge at the time such recommendations are made. When additional information is obtained, these recommendations may be updated. They may also be influenced by circumstances outside our control. Notwithstanding such recommendations, the user is responsible to determine that the product as supplied by us, is suitable for the process or purpose he intends to use it. The user of the product is solely responsible for compliance with all laws and regulation applying to the use of the product. Since we cannot control the application, use or processing of the products, we do not accept responsibility therefore. The user shall ensure that the intended use of the products will not infringe in any party's intellectual property rights.