

Textile latex

There are a large number of latices available with many individual differences through bound styrene level, type and amount of functional monomers, degree of cross-linking and molecular weight, structure, particle size, type and amount of stabiliser, additives etc. Thus different characteristics can be obtained, such as binding power, stiffness, foam characteristics, fibre binding, water resistance, odour, stickiness etc. Sometimes a compromise has to be found between the different characteristics. EOC produces approx 20 base latices which are either used alone or blended with other latices. These are then further adapted to customer requirements by post-additives (dispersing agent, foaming agent, foam stabilizer, penetrating agent).

All textile latices from EOC contain basic additives such as antioxidant and bactericide.

Latex types

	Soft	Medium	Stiff	Upholstery	Precoat	Secondary backing	Needlefelt	Woven Carpet	Synthetic Grass	Rubber Crumb	Impervious Coating	Stiffener	Thermo-formable
L3000	■			■									
L7104	■					■	■			■	■		
L7108			■					■				■	
L7109			■					■					
L7110			■		■		■						
L7148	■				■	■							
L7156	■				■	■							
L7158		■			■	■							
L7192	■				■	■							
L7295			■					■					
L7310			■		■							■	
L7313	■					■							
L7321	■			■									
L7363		■			■	■							
L7366	■					■							
L7372			■				■	■					
L7373	■				■	■							
L7380			■		■		■						
L7387									■				
L7390	■								■				
L7403	■					■	■						
L8896H			■										■
L8903			■										■

> EOC Belgium - Latex Division
 Industriepark De Bruwaan 24
 B-9700 Oudenaarde
 Belgium
 T: +32 55 33 42 11
 F: +32 55 33 42 12
 latices@eocgroup.com
 www.eocgroup.com



EOC Group

Latices



EOC Group

This product guide gives a short introduction to our product portfolio. Our website illustrates more in detail EOC's latex products and activities. Visit us at www.eocgroup.com
 Product samples and further information like datasheets and material safety data sheets can be obtained via our network of distributors and/or sales representatives.



Nonwovens



EOC has made his first steps into the non-woven world at the end of the previous century. Ever since the volume produced for the non-woven market and the variety of products has increased at a very high speed. Today we can offer products that suit the world of hygiene, construction, glass fiber, clothing, etc....

The EOC Latex Division offers its customers a broad range of binders, based on a styrene-butadiene technology.

Our wide product range opens perspectives for all customers.

The wide range of materials used, enables us to be an active player in different markets, such as paper, carpet, textile, automotive, nonwovens and construction.

Our continuous search for new technologies, the creativity of our technicians as well as our marketing strategy guarantees state-of-the art products and offers you an advantage in your quest for performance.

We have a highly skilled technical staff that supports our marketing and sales division with solutions developed in our first-class R&D-facilities, where process simulations and product analyses are performed on a daily basis.

Following this strategy we will enable you to optimize your process, improve your product quality and printability and reduce your costs.

Please, feel free to visit us at www.eocgroup.com to find our latest updated information.

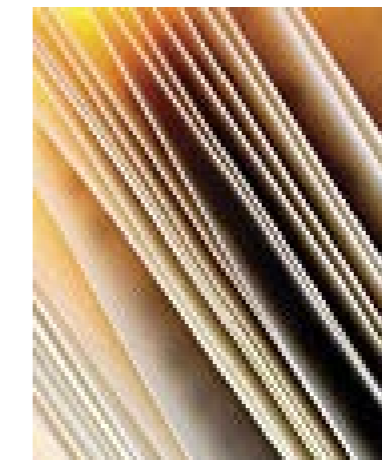
EOC latex for the nonwovens industry

Type		L8000	L8007	L8008	L8009	L8010	L8013	L8015	L8019	L8025	L8026	L8027	L8029	L8032	L8037	L8044
TSC	%	50	50	49.5	51	50	51	51	50	50	50	51	49	45	54	50
pH		8	8	8.5	7.8	8	7.8	8	7	8.5	6.5	7.7	8.5	8	7	6.5
BV	mPa.s	150	300	150	200	100	120	150	35	325	350	150	550	1200	320	600
Tg	°C	-27	-38	+20	-21	+22	+1	+35	+105	+20	+15	+5	-12	+21	+43	+12
	textile	■		■				■		■					■	
	glass			■						■	■					
	shoe							■	■				■			
	others	■	■	■	■	■	■	■	■	■	■	■	■	■	■	■

TSC Total solids contents
BV Brookfield viscosity
Tg Glass transition temperature

The in the

Paper



A guideline through the services EOC offers the paper coating market starts with the analytical section where all kinds of products get to reveal their secrets. Going from basic products to highly sophisticated chemical structures.

Once analyzed, the search for a solution starts in our R&D section. There, a very broad variety of ingredients is available, which enables us to find a solution for all kinds of problems.

Newly developed products are run on our laboratory pilot coaters, where production and laboratory meet in a very near encounter.

Print simulations are the final step in the evaluation of a coated paper. Prüfbau and IGT devices bring out the best of our latex to the surface of your paper.

EOC latex for the paper industry

Type		L0173	L0275	L0276	L0607	L0653	L7031	L7032	L7042
		ASB	ASB	ASB	XSB	XSB	XSB	XSB	ASB
TSC	%	50	49	50	50	50	50	50	50
pH		7	6.5	6.5	6	7	6	5.5	7
BV	mPa.s	500	250	250	350	175	150	350	250
Tg	°C	2	7	7	-7	16	15	12	13
	sheet	■	■	■	■		■	■	■
	web					■	■	■	
	ncr	■		■					■
	label	■					■	■	
	wet strength	■	■	■	■	■	■	■	■
	dry strength	■	■	■	■	■	■	■	■
	blistering	■	■	■	■	■	■	■	■

TSC Total solids contents
BV Brookfield viscosity
Tg Glass transition temperature

The in the